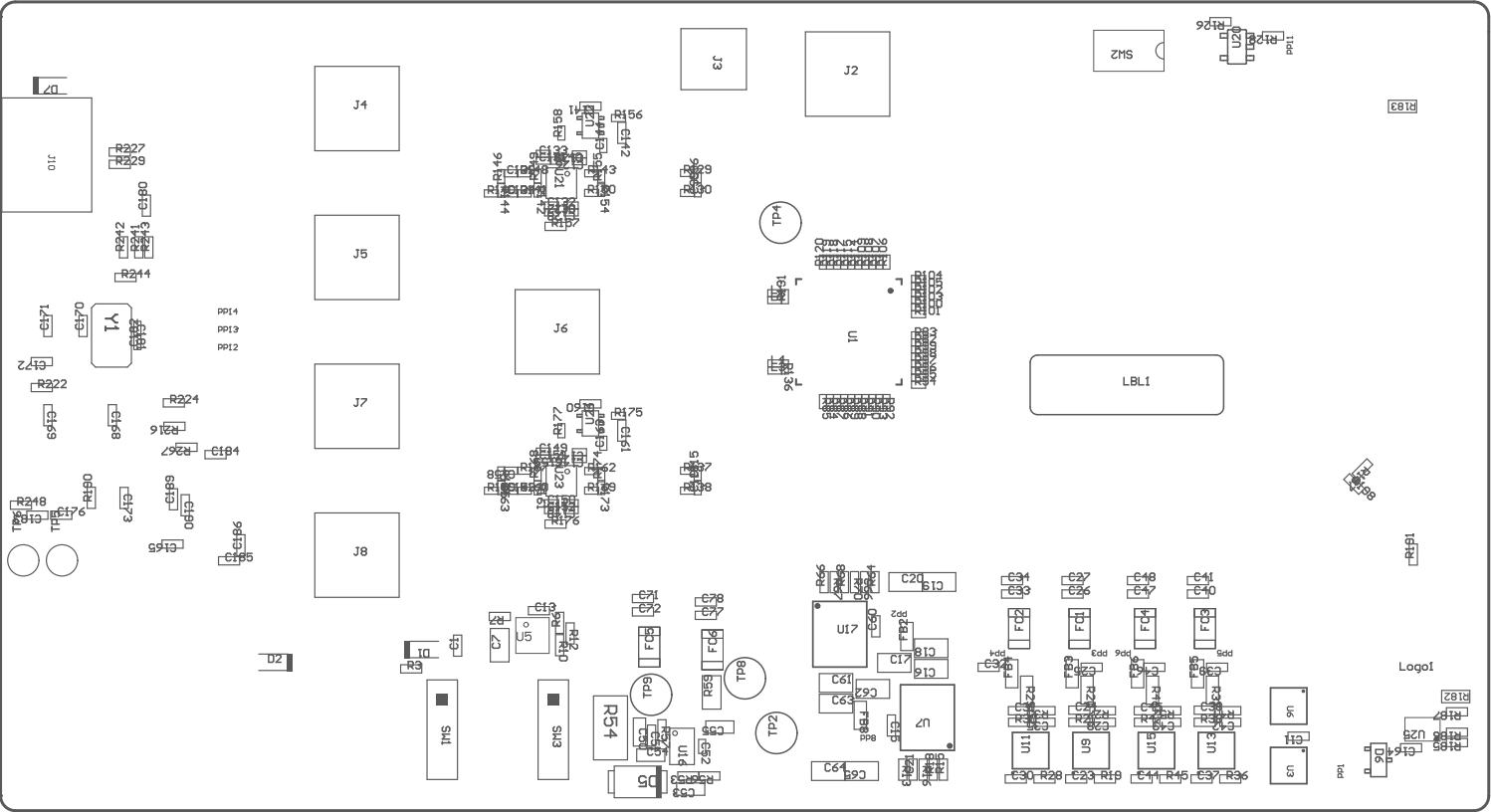
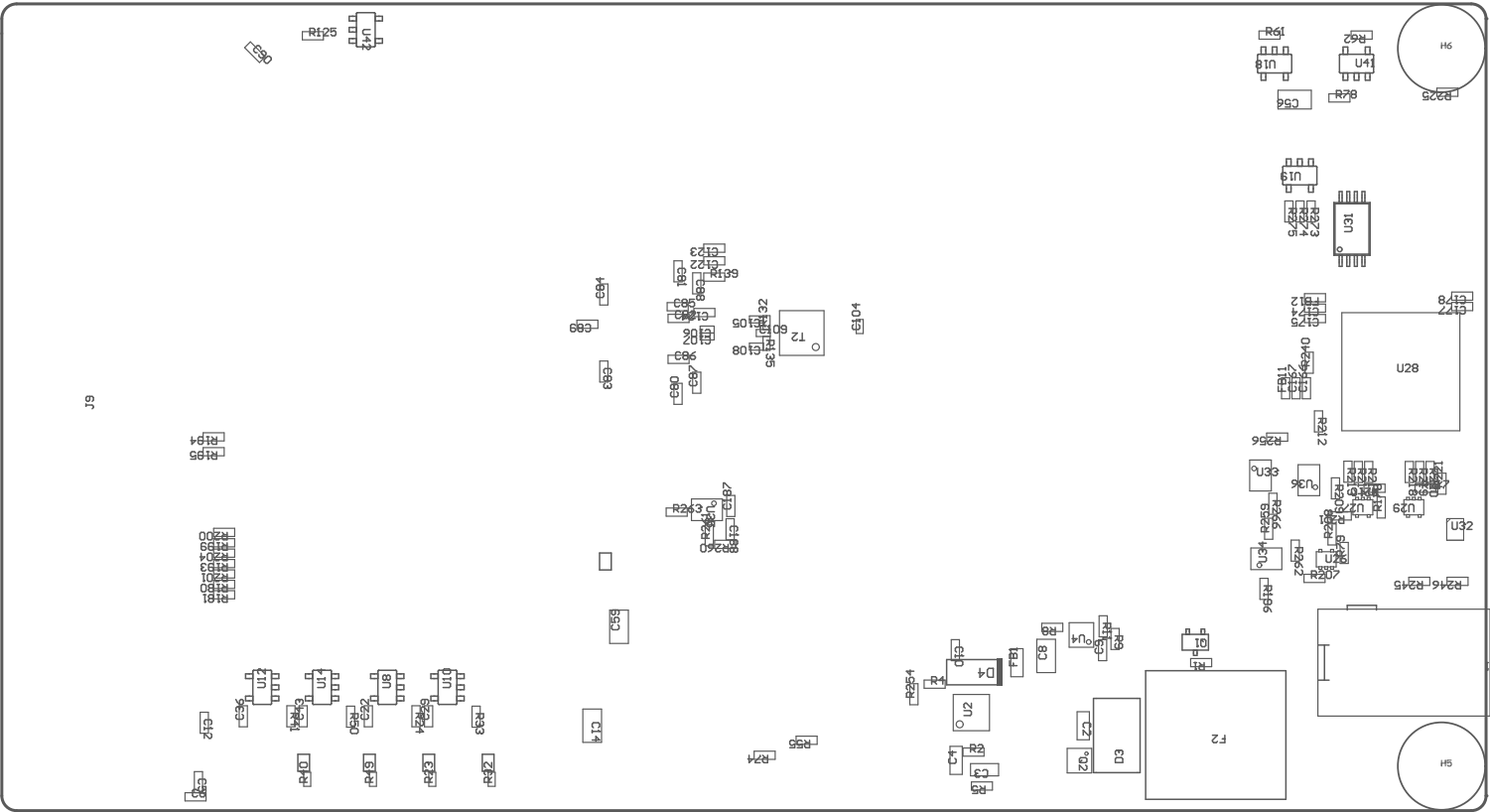


- ZZ4 ■These assemblies must comply with workmanship standards IPC-A-610 Class 2, unless otherwise specified.
- ZZ3 ■These assemblies must be clean and free from flux and all contaminants. Use of no clean flux is not acceptable.
- ZZ2 ■These assemblies are ESD sensitive, ESD precautions shall be observed.
- ZZ1 ■Install label in silkscreened box after final wash. Text shall be 8 pt font. Text shall be per the Label Table in the PDF schematic.



COMPONENTS MARKED 'DNP' SHOULD NOT BE POPULATED.  
ASSEMBLY VARIANT: 001

PCB VIEWED FROM TOP SIDE	BOARD #: DC374	REV: A	SUN REV: 70289eb0071cabd93bfafab9244b26c8c6d1ef00 [Locally Modified]
PLOT NAME = Top Assembly Drawing	GENERATED : 5/29/2025 2:07:21 PM	TEXAS INSTRUMENTS	



COMPONENTS MARKED 'DNP' SHOULD NOT BE POPULATED.  
ASSEMBLY VARIANT: 001

PCB VIEWED FROM BOTTOM SIDE	BOARD #: DC374	REV: A	SUN REV: 70289eb0071cabd93bfafab9244b26c8c6d1ef00 [Locally Modified]
PLOT NAME = Bottom Assembly Drawing	GENERATED : 5/29/2025 2:07:21 PM	TEXAS INSTRUMENTS	